

Small Geared Motor SE with DC Motor, Size 2

Housing: Aluminium, sealed against lubricant leaks and protected against dust, can be mounted in any position.

Teeth: Worm gear made from plastic, worm made from steel, ground. Not self-locking.

Bearing: Motor and gearbox with roller bearing.

Lubrication: Maintenance free grease lubrication.

Motor: Brushed DC motor 24 V.

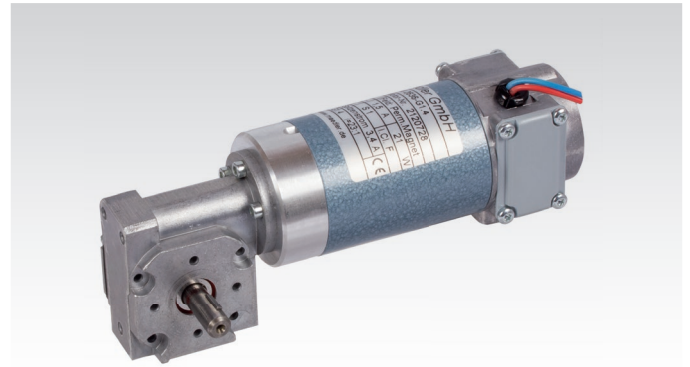
Nominal motor speed 3,000 min⁻¹, worm pinned on motor shaft.

Free lead ends. Sense of rotation can be changed by swapping leads over. *Brake on request.

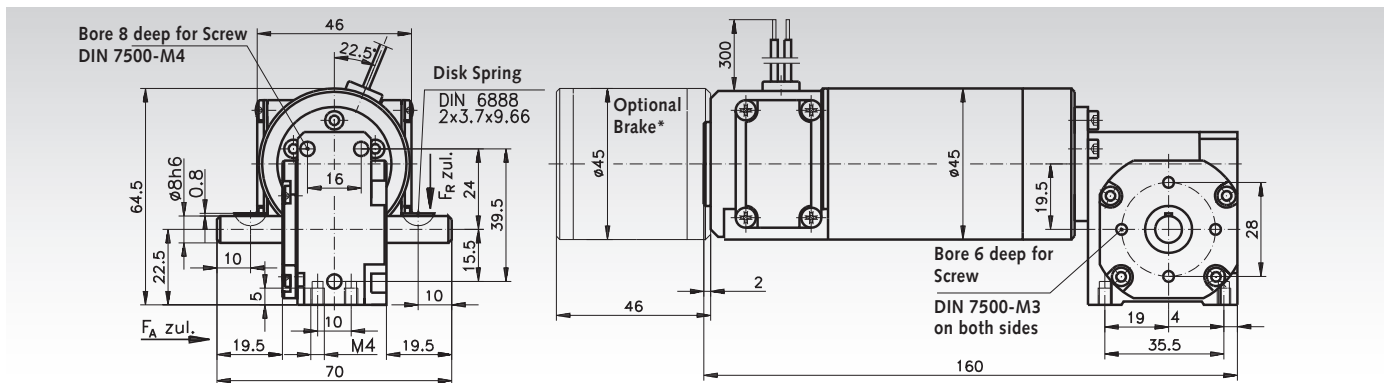
Protection class: IP 41.

Insulation class: F.

Operating mode: S1.



Ordering Details: e.g.: Type, Size 2, Voltage, Output Speed, Product No.



Size 2

Product No. 24 V	Nominal Output Speed min ⁻¹	Ratio i	max. continuous Torque Nm	Max. Starting Torque Nm	Nominal Motor power W	Output Power W	Gearbox Efficiency %	Weight kg
430 420 24	411	7,3:1	0,35	2,0	20	15	76	0,8
430 421 24	261	11,5:1	0,50	2,0	19	14	73	0,8
430 422 24	200	15:1	0,65	2,0	20	14	70	0,8
430 423 24	130	23:1	1,00	2,0	21	14	67	0,8
430 424 24	100	30:1	1,10	2,0	19	12	63	0,8
430 425 24	79	38:1	1,05	1,2	15	9	60	0,8

Permissible radial shaft load F_R : 110 N (middle shaft).

Permissible axial shaft load F_A : 60 N.

Tolerances +/- 10%.

Note

The efficiency stated in the table is valid for properly run-in gearboxes at operating temperature. To prevent the gearbox from being overloaded, the stated limit loads must not be exceeded. At reversed operation the limit loads must be multiplied with the factor 0.75.

* Optionally also available with DC speed sensor, incremental encoder and brake.

Speed controllers

Page 741

