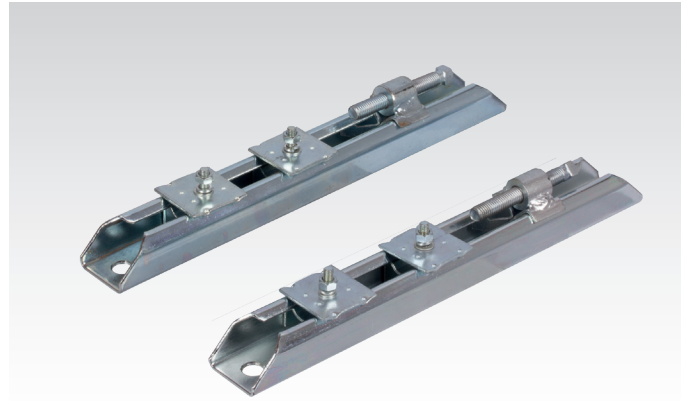
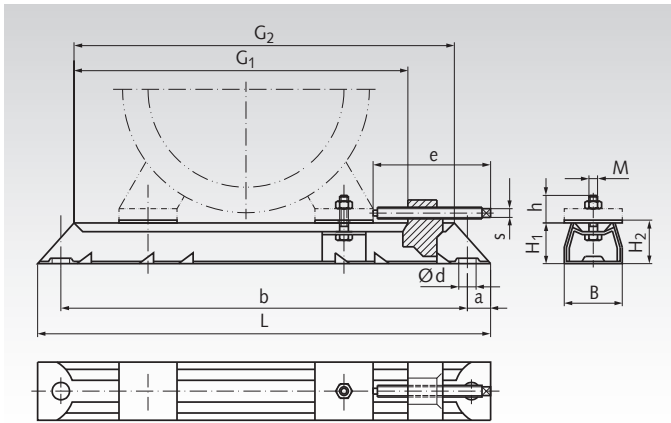


Motor-Tensioning Rail Sets, Made from Steel, SPS, with Movable Attachment Clamps



Ordering details: e.g.: Type, Overall Length, Product No.

Sold in pairs: 1 x Product No. = 1 pair

Product No. Pair	Overall Length L mm	Sliding Length G ₁ mm	Motor Size	M x h mm	e x S mm	G ₂ mm	a mm	b mm	Ød mm	B mm	H ₁ mm	H ₂ mm	Weight kg
430 180 00	312	240	63/71	M6 x 19	84 x 10	262	16	280	12	40	28	30	1,5
430 182 00	395	302	80/90	M8 x 35	106 x 12	325	20	355	12	50	40	43	3,3
430 184 00	495	405	100/112/132	M10 x 35	97 x 9	425	20	455	12	50	40	43	4,15
430 186 00	630	515	132	M10 x 37	138 x 24*	542	25	580	14	60	50	54	8,1

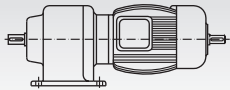
* Hexagon Bolt with SW24.

Frequency Inverters
Page 744

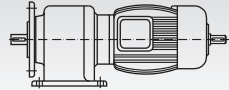


Models Helical Geared Motors (The pictures only show the models, not the gearbox version)

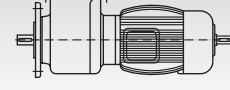
B 3



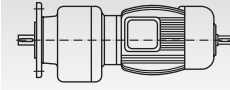
B 3 / B 5



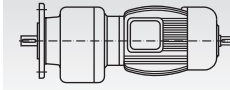
B 8 / B 5



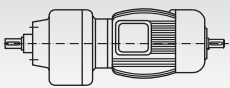
B 5



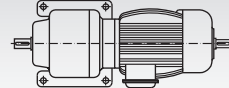
B 5a



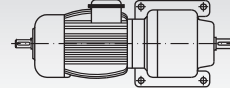
B 5 without Flange



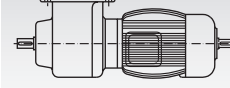
B 6



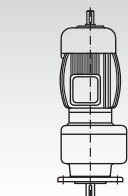
B 7



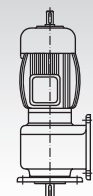
B 8



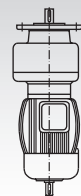
V 1



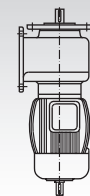
V 1 / V 5



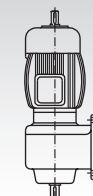
V 3



V 3 / V 6



V 5



V 6

