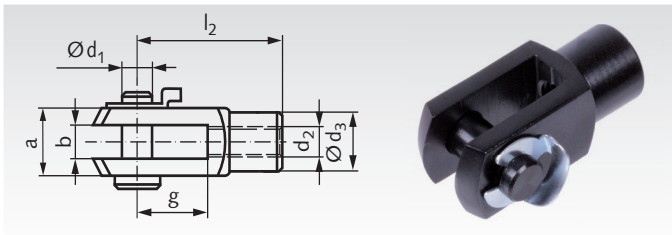


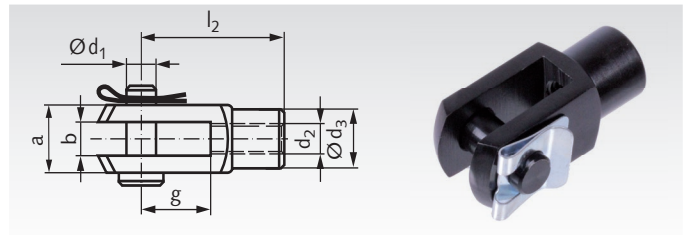
Clevis Joints similar DIN 71752, Aluminium, KL



Material: Clevis and bolt aluminium, anodized black.
With KL-Retainer from steel, bright zinc-plated.

Ordering Details: e.g.: Product No. 637 660 01, Clevis joint 4 x 8, Aluminium, KL

Clevis Joints similar DIN 71752, Aluminium, SL

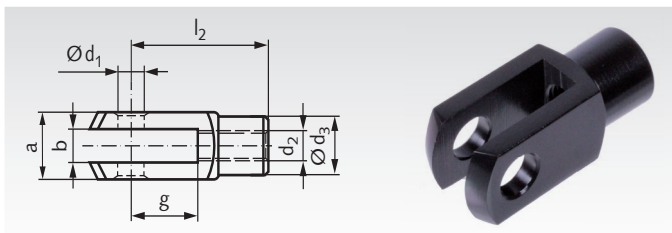


Material: Clevis and bolt aluminium, anodized black.
With SL-Retainer from steel, bright zinc-plated.

Ordering Details: e.g.: Product No. 637 664 01, Clevis joint 4 x 8, Aluminium, SL

Product No. KL right	Product No. SL right	Size mm	a mm	b mm	d ₁ mm	d ₂ mm	d ₃ mm	g mm	l ₂ mm	Weight g
637 660 01	637 664 01	4 x 8	8	4	4	M4	8	8	16	2,2
637 660 02	637 664 02	4 x 16	8	4	4	M4	8	16	24	2,9
637 660 03	637 664 03	5 x 10	10	5	5	M5	9	10	20	4,2
637 660 05	637 664 05	6 x 12	12	6	6	M6	10	12	24	7,2
637 660 07	637 664 07	8 x 16	16	8	8	M8	14	16	32	16,8
637 660 09	637 664 09	10 x 20	20	10	10	M10	18	20	40	33,3
637 660 11	637 664 11	12 x 24	24	12	12	M12	20	24	48	54,4
637 660 13	637 664 13	14 x 28	27	14	14	M14	24	28	56	78,1
637 660 15	637 664 15	16 x 32	32	16	16	M16	26	32	64	121,2

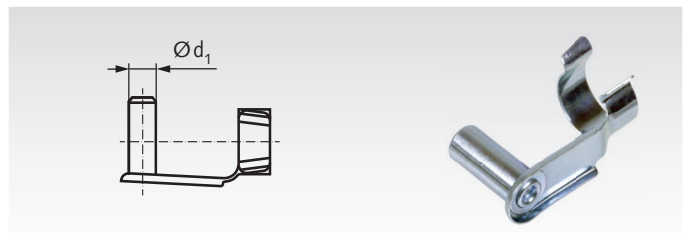
Clevises similar DIN 71752, Aluminium



Material: Aluminium, anodized black.
To be used with ES bolt or customer's bolt.

Ordering Details: e.g.: Product No. 637 662 01, Clevis 4 x 8, Aluminium

Snap-On-Bolts type ES



Material: Steel, bright zinc-plated.
ES bolt and clevis can be used as fork joint.

Ordering Details: e.g.: Product No. 637 401 00, ES Bolt for Clevis 4 x 8

Product No. Clevis	Product No. Bolt	Size mm	a mm	b mm	d ₁ mm	d ₂ mm	d ₃ mm	g mm	l ₂ mm	Weight Clevis g	Weight Bolt g
637 662 01	637 401 00	4 x 8	8	4	4	M4	8	8	16	1,7	1,5
637 662 02	637 402 00	4 x 16	8	4	4	M4	8	16	24	2,4	2,6
637 662 03	637 403 00	5 x 10	10	5	5	M5	9	10	20	3,1	2,7
637 662 05	637 405 00	6 x 12	12	6	6	M6	10	12	24	5,2	4,6
637 662 07	637 407 00	8 x 16	16	8	8	M8	14	16	32	12,7	10,4
637 662 09	637 409 00	10 x 20	20	10	10	M10	18	20	40	25,4	19,0
637 662 11	637 411 00	12 x 24	24	12	12	M12	20	24	48	41,6	33,5
637 662 13	637 413 00	14 x 28	27	14	14	M14	24	28	56	61,2	45
637 662 15	637 415 00	16 x 32	32	16	16	M16	26	32	64	96,9	70