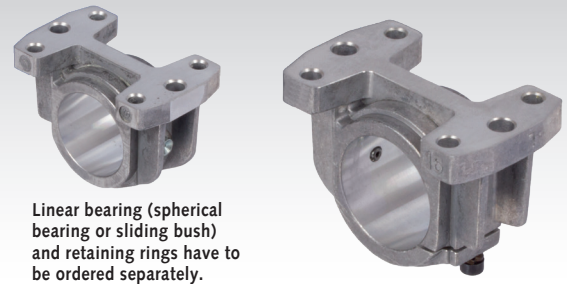
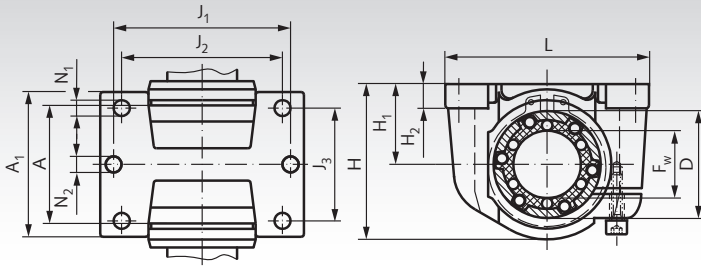


Precision Housings KG for Linear Bearings of Closed Design, ISO Series 3



Linear bearing (spherical bearing or sliding bush) and retaining rings have to be ordered separately.

Material: Aluminium die-cast.

Light housing for linear bearings of closed design, ISO Series 3 (linear bearing has to be ordered separately).

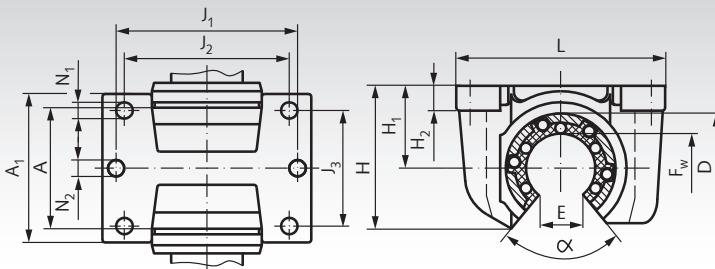
The housings can be mounted standing, upside-down or horizontally. The bearing is secured in the housing against axial and radial movement with a grease nipple. At the slotted housing, the desired radial clearance can be set with an adjusting screw during the mounting.

Ordering Details: e.g.: Product No. 646 508 00, Precision Housing KG, D = 16 mm, Closed

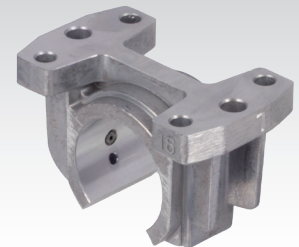
Product No. Closed	Product No. Slotted	F _w	D	A	A ₁	H	Dimensions in mm						N ₁	N ₂	Weight g	Product No. Matching Spherical Bearing or Slide Bearing			Product No. Retaining Ring DIN 471 Page 582		Weight g
							H ₁ ^{±0,01}	H ₂	J ₁	J ₂	J ₃	L				Spher. Bear. / Spher. Bear. / Slide Bear.					
646 508 00	646 608 00	8	16	14	27	28	15	5,5	35	25	20	45	3,2	5,3	18	646 008 00/ 646 108 00/ 646 208 00	617 416 00	0,8			
646 512 00	646 612 00	12	22	20	31	34,5	18	6	42	32	23	52	4,3	5,3	38	646 012 00/ 646 112 00/ 646 212 00	617 422 00	1,7			
646 516 00	646 616 00	16	26	22	34,5	40,5	22	7	46	40	26	56	4,3	5,3	54	646 016 00/ 646 116 00/ 646 216 00	617 426 00	2,1			
646 520 00	646 620 00	20	32	28	41	48	25	8	58	45	32	70	4,3	6,4	100	646 020 00/ 646 120 00/ 646 220 00	617 432 00	3,6			
646 525 00	646 625 00	25	40	40	52	58	30	10	68	60	40	80	5,3	6,4	200	646 025 00/ 646 125 00/ 646 225 00	617 440 00	6,3			
646 530 00	646 630 00	30	47	48	59	67	35	10	76	68	45	88	6,4	6,4	300	646 030 00/ 646 130 00/ 646 230 00	617 447 00	7,8			
646 540 00	646 640 00	40	62	56	74	85	45	12	94	86	58	108	8,4	8,4	460	646 040 00/ 646 140 00/ 646 240 00	617 462 00	14,4			
646 550 00	646 650 00	50	75	72	66	99	50	14	116	108	50	135	8,4	10,5	750	646 050 00/ 646 150 00/ 646 250 00	617 475 00	21,0			

Shaft steel page 466. Shaft blocks page 475.

Precision Housings KG-O for Linear Bearings of Open Design, ISO Series 3



Linear bearing (spherical bearing or sliding bush) have to be ordered separately.



Material: Aluminium die-cast.

Light housing for linear bearings of open design, ISO Series 3 (linear bearing has to be ordered separately).

The housings can be mounted standing, upside-down or horizontally. The bearing is secured in the housing against axial and radial movement with a grease nipple.

Ordering Details: e.g.: Product No. 646 512 01, Precision Housing KG-O, D = 22 mm, Open

Product-No. Open	F _w mm	D mm	A mm	A ₁ mm	H _{±0,01} mm	H ₁ mm	H ₂ mm	J ₁ mm	J ₂ mm	J ₃ mm	L mm	N ₁ mm	N ₂ mm	E mm	α Grad	Weight g	Product-No. Matching Bearing		
																	Spher. Bear./ Spher. Bear. / Slide Bea.		
646 512 01	12	22	20	31	28	18	6	42	32	23	52	4,3	5,3	7,6	78	33	646 012 01	646 112 01	646 212 01
646 516 01	16	26	22	34,5	35	22	7	46	40	26	56	4,3	5,3	10,4	78	44	646 016 01	646 116 01	646 216 01
646 520 01	20	32	28	41	42	25	8	58	45	32	70	4,3	6,4	10,8	60	88	646 020 01	646 120 01	646 220 01
646 525 01	25	40	40	52	51	30	10	68	60	40	80	5,3	6,4	13,2	60	180	646 025 01	646 125 01	646 225 01
646 530 01	30	47	48	59	60	35	10	76	68	45	88	6,4	6,4	14,2	50	260	646 030 01	646 130 01	646 230 01
646 540 01	40	62	56	74	77	45	12	94	86	58	108	8,4	8,4	18,7	50	400	646 040 01	646 140 01	646 240 01
646 550 01	50	75	72	66	88	50	14	116	108	50	135	8,4	10,5	23,6	50	650	646 050 01	646 150 01	646 250 01

Shaft steel with shaft support page 467.