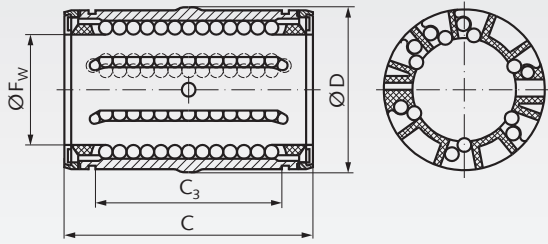


Linear Bearings KB-3-A ISO Series 3, Premium, Self-Aligning, Closed Design



Self-aligning linear bearings series 3 of ISO standard 10285 from premium brand in top quality.

High load-bearing capacity, due to the asymmetric position of the rows of balls and the specially shaped raceway segments. These linear bearings can be fitted inside a closed or slotted housing and are thus adjustable.

With wiping double-lip seals.

These bearings are self-aligning up to $\pm 0,5^\circ$. All bearings are lubricated ready-to-install.

Recommended shaft tolerance h6, housing tolerance H6.

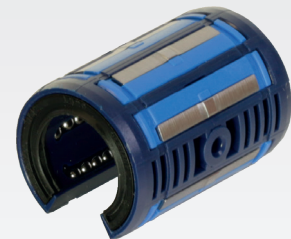
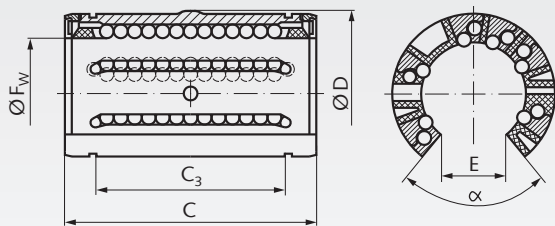
Stainless version on request.

Ordering Details: e.g.: Product No. 646 112 06, Linear Bearing KB-3-A, Internal \varnothing 12 mm

Product No. Closed	F_w mm	D mm	$C_{-0,02}$ mm	$C_3_{-0,02}$ mm	Load rating dyn. C N	Load rating stat. C_0 N	Weight g	Product No.	Weight
								Retaining Ring DIN 471 Page 582	g
646 112 06	12	22	32	20,3	1220	930	20	617 422 00	1,7
646 116 06	16	26	36	22,3	1400	1060	25	617 426 00	2,1
646 120 06	20	32	45	28,3	2550	1800	55	617 432 00	3,6
646 125 06	25	40	58	40,4	3800	2320	106	617 440 00	6,3
646 130 06	30	47	68	48,4	5600	3750	120	617 447 00	7,8
646 140 06	40	62	80	56,3	9650	5700	200	617 462 00	14,4
646 150 06	50	75	100	72,3	11200	6950	440	617 475 00	21,0

Shaft steel page 466. Shaft blocks page 475.
Precision housings page 481.

Linear Bearings KB-3-A-O ISO Series 3, Premium, Self-Aligning, Open Design



Self-aligning linear bearings series 3 of ISO standard 10285 from premium brand in top quality.

High load-bearing capacity, due to the asymmetric position of the rows of balls and the specially shaped raceway segments.

With wiping double-lip seals.

These bearings are self-aligning up to $\pm 0,5^\circ$. All bearings are lubricated ready-to-install.

Recommended shaft tolerance h6, housing tolerance H6.

Stainless version on request.

Ordering Details: e.g.: Product No. 646 112 07, Linear Bearing KB-3-A-O, Internal \varnothing 12 mm

Product No. Open	F_w mm	D mm	$C_{-0,02}$ mm	$C_3_{-0,02}$ mm	E mm	α °	Load rating		Weight g
							dyn. C N	stat. C_0 N	
646 112 07	12	22	32	20,3	7,6	78	1080	815	12
646 116 07	16	26	36	22,3	10,4	78	1320	865	16
646 120 07	20	32	45	28,3	10,8	60	2000	1370	35
646 125 07	25	40	58	40,4	13,2	60	2900	2040	70
646 130 07	30	47	68	48,4	14,2	50	4650	3250	110
646 140 07	40	62	80	56,3	18,7	50	7800	5200	220
646 150 07	50	75	100	72,3	23,6	50	11200	6950	370

Shaft steel with shaft support page 467.
Precision housings page 481.