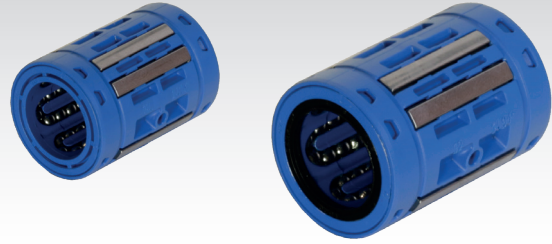
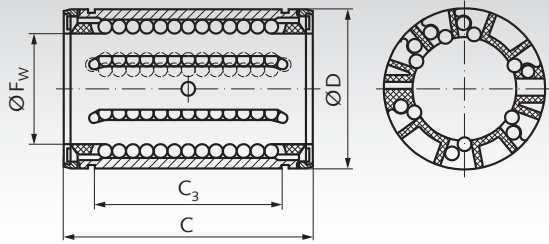


Linear Bearings KB-3 ISO Series 3, Premium, Closed Design



Linear bearings series 3 of ISO standard 10285 from premium brand in top quality.

High load-bearing capacity, due to the asymmetric position of the rows of balls and the specially shaped raceway segments. These linear bearings can be fitted inside a closed or open housing and are thus adjustable.

With shields or wiping double-lip seals.

Bearings with FW 5mm must be lubricated before use. All other bearings are lubricated ready-to-install.

Recommended shaft tolerance h6, housing tolerance H6.

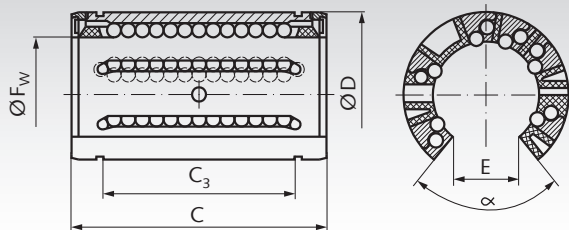
Stainless version on request.

Ordering Details: e.g.: Product No. 646 005 00, Linear Bearing KB-3, Internal Ø 5 mm, with Shields

Product No. with Shields	Product No. with Seals	F _w mm	D mm	C mm	C ₃ mm	Number of Rows of Balls	Load Rating dyn. C N	Load Rating stat. C ₀ N	Weight g	Product No. Retaining Ring DIN 471 Page 582	Weight g
646 005 00	646 105 00	5	12	22	12	4	280	210	5	617 412 00	0,5
646 008 00	646 108 00	8	16	25	14	4	490	355	9	617 416 00	0,8
646 012 00	646 112 00	12	22	32	20	5	1370	1120	20	617 422 00	1,7
646 016 00	646 116 00	16	26	36	22	5	1600	1290	26	617 426 00	2,1
646 020 00	646 120 00	20	32	45	28	6	3250	2650	56	617 432 00	3,6
646 025 00	646 125 00	25	40	58	40	6	4550	3800	108	617 440 00	6,3
646 030 00	646 130 00	30	47	68	48	6	7100	5700	122	617 447 00	7,8
646 040 00	646 140 00	40	62	80	56	6	11200	8300	205	617 462 00	14,4
646 050 00	646 150 00	50	75	100	72	7	13400	12200	460	617 475 00	21,0

Shaft steel page 466. Shaft blocks page 475. Precision housings page 481.

Linear Bearings KB-3-O ISO Series 3, Premium, Open Design



Linear bearings series 3 of ISO standard 10285 from premium brand in top quality.

High load-bearing capacity, due to the asymmetric position of the rows of balls and the specially shaped raceway segments.

With shields or wiping double-lip seals.

All bearings are lubricated ready-to-install.

Recommended shaft tolerance h6, housing tolerance H6.

Stainless version on request.

Ordering Details: e.g.: Product No. 646 012 01, Linear Bearing KB-3-O, Internal Ø 12 mm, with Shields

Product No. with Shields	Product No. with Seals	F _w mm	D mm	C mm	C ₃ mm	E mm	α Degrees	Load Rating in N dyn. C	Load Rating in N stat. C ₀	Weight g
646 012 01	646 112 01	12	22	32	20	7,6	78	1160	980	13
646 016 01	646 116 01	16	26	36	22	10,4	78	1500	1290	17
646 020 01	646 120 01	20	32	45	28	10,8	60	2240	2040	36
646 025 01	646 125 01	25	40	58	40	13,2	60	3350	3350	71
646 030 01	646 130 01	30	47	68	48	14,2	50	5600	5700	114
646 040 01	646 140 01	40	62	80	56	18,7	50	9000	8150	230
646 050 01	646 150 01	50	75	100	72	23,6	50	13400	12200	390

Shaft steel with shaft support page 467. Precision housings page 481.