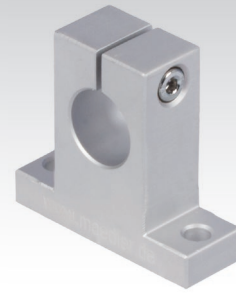
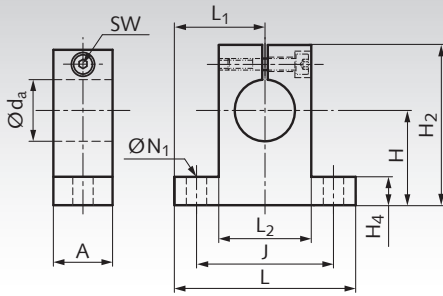


Shaft Block GWL universal use



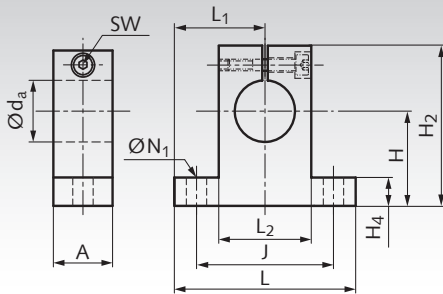
Material: Extruded Aluminium.
Clamp screw strength 8.8, Steel zinc-plated.

Universel use shaft blocks,
e.g. for fastening of guide shafts.

Ordering Details: e.g.: Product No. 646 406 08, Shaft Block GWL, for Shaft-Ø 8 mm

Product No.	d _a mm	A mm	H ^{±0,02} mm	H ₂ mm	H ₄ mm	J mm	L mm	L ₁ ^{±0,05} mm	L ₂ mm	N ₁ mm	Clamp- screw DIN 912	sw mm	Weight g
646 406 08	8	14	20	32,8	6	32	42	21	18	5,5	M4	3	24
646 406 10	10	14	20	32,8	6	32	42	21	18	5,5	M4	3	24
646 406 12	12	14	23	37,5	6	32	42	21	20	5,5	M4	3	30
646 406 14	14	14	23	37,5	6	32	42	21	20	5,5	M4	3	28
646 406 16	16	16	27	44	8	38	48	24	25	5,5	M4	3	40
646 406 20	20	20	31	51	10	45	60	30	30	6,6	M5	4	70
646 406 25	25	24	35	60	12	56	70	35	38	6,6	M6	5	130
646 406 30	30	28	42	70	12	64	84	42	44	9	M6	5	180
646 406 40	40	36	60	96	15	90	114	57	60	11	M8	6	420
646 406 50	50	40	70	120	18	100	126	63	74	14	M12	10	750

Shaft Block GWLE universal use, European Dimensions

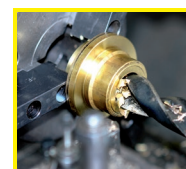


Material: Extruded Aluminium.
Clamp screw strength 8.8, Steel zinc-plated.

Universel use shaft blocks,
e.g. for fastening of guide shafts.

Ordering Details: e.g.: Product No. 646 407 08, Shaft Block GWLE, for Shaft-Ø 8 mm

Product No.	d _a mm	A mm	H ^{±0,02} mm	H ₂ mm	H ₄ mm	J mm	L mm	L ₁ ^{±0,05} mm	L ₂ mm	N ₁ mm	Clamp- screw DIN 912	sw mm	Weight g
646 407 08	8	10	15	27	5	25	32	16	16	4,5	M3	2,5	24
646 407 12	12	12	20	35	5,5	32	42	21	20	5,5	M4	3	30
646 407 16	16	16	25	42	6,5	40	50	25	26	5,5	M4	3	40
646 407 20	20	20	30	50	8	45	60	30	32	5,5	M4	3	70
646 407 25	25	25	35	58	9	60	74	37	38	6,6	M5	4	130
646 407 30	30	28	40	68	10	68	84	42	45	9	M6	5	180
646 407 40	40	32	50	86	12	86	108	54	56	11	M8	6	420
646 407 50	50	40	60	100	14	108	130	65	80	11	M8	6	750



**Reworking within
24h-service possible.
Custom made parts
on request.**