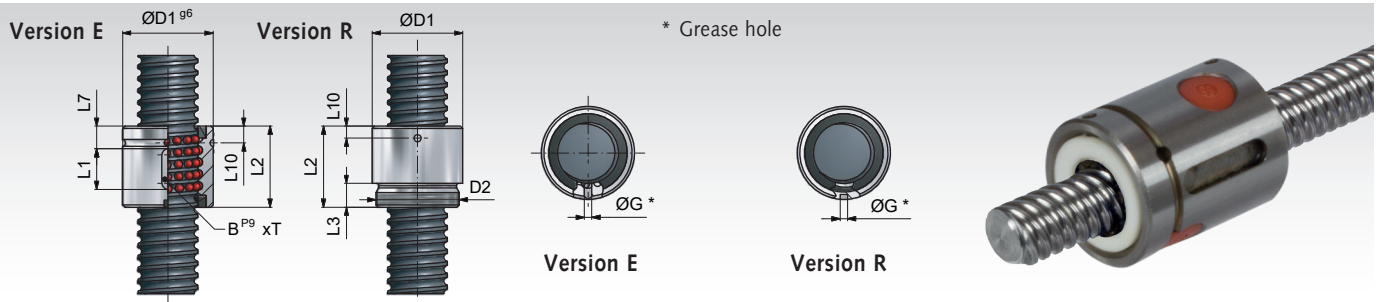


## Ball Screw Drives - Cylindrical Ball Screw Nuts



**Material:** Bearing steel 100Cr6, No. 1.3505.

To be combined with **MÄDLER®** ball screw spindles. The spindle has to be ordered separately.

Ordering Details: e.g.: Product No. 640 100 26, Cylindrical Ball Screw Nut 10x2mm

With axial clearance, for running with low friction.

Temperature range: -20°C to +80°C (for short time to +110°C).

Product No.	Size mm	Ball Ø mm	Turns per Circuit	Load Rating		Axial Clearance mm	Weight kg
				$C_{dyn.}$ kN	$C_{stat.}$ kN		
640 100 26	10x2	1,2	3	1,51	3,02	0,06	0,028
640 120 46	12x4	2,381	3	4	6,7	0,07	0,05
640 160 56	16x5	3,175	3	6,3	11,5	0,07	0,07
640 161 06	16x10	3,5	3	6,8	12,6	0,1	0,11
640 200 56	20x5	3,175	3	7,15	14,68	0,07	0,15
640 250 56	25x5	3,175	3	8	18,68	0,07	0,15
640 251 06	25x10	3,5	3	8,7	20,5	0,1	0,22
640 320 56	32x5	3,175	5	16,9	51,0	0,07	0,3
640 321 06	32x10	6,35	3	25,52	55,3	0,15	0,4
640 323 26	32x32	4,762	1,75x2	21,4	52,6	0,12	0,6
640 400 56	40x5	3,175	5	26,1	53,1	0,07	0,5
640 401 06	40x10	6,35	3	30,1	71	0,15	0,5
640 501 06	50x10	6,35	5	53,1	155	0,15	1,05
640 502 06	50x20	6,35	3	48	137	0,15	1,1
640 631 06	63x10	6,35	5	60,7	206	0,15	1,6

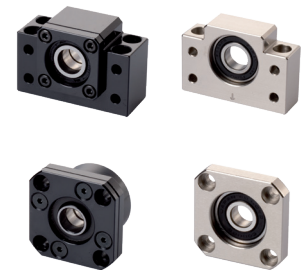
### Mounting

The ball screw nuts will be delivered with a plastic tube inside. This tube is a transport protection against losing the balls and is also a mounting aid. When the tube is held against the spindle end, the nut can get screwed onto the spindle without losing balls. Before use, the nut and the spindle have to be lubricated. For grease lubrication, normal roller bearing grease is recommended. The lubricant consumption depends on the condition of use.

Operation manual at [www.maedler.de](http://www.maedler.de) in the section Downloads

### Dimensions

Size mm	Version	D <sub>1</sub> mm	D <sub>2</sub> mm	G mm	L <sub>1</sub> mm	L <sub>2</sub> mm	L <sub>3</sub> mm	L <sub>7</sub> mm	L <sub>10</sub> mm	BxT mm
10x2	R	19,5	M17x1	3	-	25	7	-	5	-
12x4	E	22	-	2,5	15	30	-	10	6	3x1,8
16x5	E	28	-	3	20	34	-	8,5	7	5x2
16x10	E	28	-	3	20	40	-	15	7	5x2
20x5	E	36	-	3	20	34	-	8,5	7	5x2
25x5	E	40	-	3	20	34	-	8,5	7	5x2
25x10	E	40	-	3	20	50	-	15	7,5	5x2
32x5	E	50	-	3	30	45	-	8,5	7	6x2,5
32x10	E	53	-	4	30	60	-	15	10	6x2,5
32x32	E	56	-	4	20	88	-	34	9,5	5x3
40x5	E	63	-	3	30	45	-	8,5	7	6x2,5
40x10	E	63	-	4	30	60	-	15	10	6x2,5
50x10	E	75	-	4	36	82	-	23	11	6x2,5
50x20	E	85	-	4	36	96	-	23	11	6x2,5
63x10	E	90	-	4	36	82	-	23	11	6x2,5



**Bearing Units  
for Spindels page 414**

### Ball Screw Nuts – Mounting and Demounting



- The plastic tube (called mounting aid) is necessary for storage, transport and as a mounting tool. This tube must never be pulled out.
- If you pull the tube out of the nut, the balls will fall out.
- Press the tube the whole time against the spindle thread, until the mounting is finished. Move the nut on the tube to the start of the spindle thread.
- Turn the nut counterwise onto the spindle thread.
- For the last turns, the plastic dirt wiper must be hold, so that it will not be pushed out of its seat.
- Keep the plastic tube and this mounting instruction for future reference.
- The demounting is carried out by reversing the procedure.
- After demounting, the nut must be fixed on the tube with a cable strap, a string or a wire, so that the tube cannot slide out of the nut.