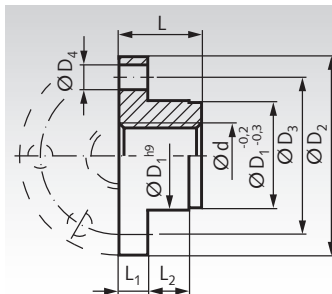
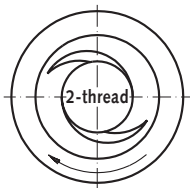


Ready-to-Install Flange Nuts with Metric ISO-Trapezoidal Thread DIN 103, Double-thread

Material: Grey cast iron GG25
Red brass Rg7 (CuSn7Zn4Pb7-C).

Tolerance zone 7H.



Ordering Details: e.g.: Product No. 645 770 16, flange nut GG25, Tr. 16 x 8 P4

Double-thread, Right Hand

Product No. Grey Cast	Product No. Red Brass	Tr. Thread Ød mm	D ₁ mm	DIN ISO 2768 m						Weight		Accessories (order separately)*	
				D ₂ mm	D ₃ mm	6 x D ₄ mm	L mm	L ₁ mm	L ₂ mm	Grey Cast kg	Red Brass kg	Product No. adapter KARA	Product No. adapter KONA
645 770 16	645 771 16	16 x 8 P4	26	48	38	6	20	7	10	0,12	0,13	644 701 26	644 702 26
645 770 20	645 771 20	20 x 8 P4	30	58	45	7	22	8	12	0,17	0,20	644 701 30	644 702 30
645 770 24	645 771 24	24 x 10 P5	40	72	58	7	28	10	12	0,36	0,42	644 701 40	644 702 40
645 770 30	645 771 30	30 x 12 P6	50	82	68	7	44	12	15	0,85	0,95	644 701 50	644 702 50
645 770 40	645 771 40	40 x 14 P7	60	130	95	9	60	15	20	2,00	2,18	644 701 60	644 702 60

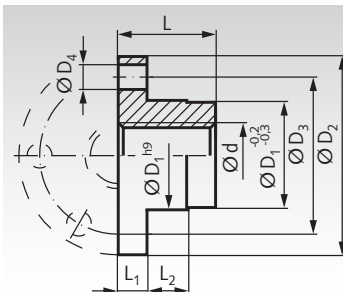
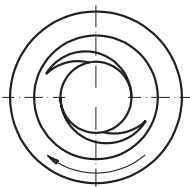
* Adapter see page K43_N108.

Comparison of friction coefficients see page 445.

Ready-to-Install Flange Nuts EFM with Metric ISO-Trapezoidal Thread DIN 103, Double-thread

Material: Red brass Rg7 (CuSn7Zn4Pb7-C).

Tolerance zone 7H.



Ordering Details: e.g.: Product No. 645 775 12, flange nut EFM, Tr. 12 x 6 P3

Double-thread, Right Hand

Product No. Red Brass	Tr. Thread Ød mm	D ₁ mm	D ₂ mm	D ₃ mm	DIN ISO 2768 m				Weight kg	Accessories (order separately)*	
					6 x D ₄ mm	L mm	L ₁ mm	L ₂ mm		Product No. adapter KARA	Product No. adapter KONA
645 775 12	12 x 6 P3	28	48	38	6	28	12	8	0,24	644 701 28	644 702 28
645 775 16	16 x 8 P4	28	48	38	6	44	12	8	0,28	644 701 28	644 702 28
645 775 20	20 x 8 P4	32	55	45	7	44	12	8	0,35	644 701 32	644 702 32
645 775 24	24 x 10 P5	32	55	45	7	44	12	8	0,30	644 701 32	644 702 32
645 775 30	30 x 12 P6	38	62	50	7	46	14	8	0,42	644 701 38	644 702 38
645 775 40	40 x 14 P7	63	95	78	9	73	16	10	1,82	644 701 63	644 702 63

* Adapter see page K43_N108.

Comparison of friction coefficients see page 445.