

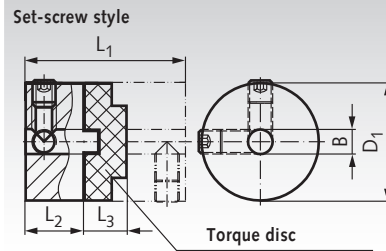
## Torsionally-Stiff Couplings HZD with Through Holes, Stainless

**Material:** Hubs made from stainless steel 1.4305 (AISI 303).  
Torque disc made from black polyacetel.



These 3-part zero backlash couplings provide electrical insulation. They consist of two hubs and a torque disc. They are versatile and of robust design. Large radial compensation, easy mounting even in confined spaces.

**Applications:** Ideal for stepper motors due to the damping properties of plastic torque discs. Positioning drives, position encoders such as incremental or absolute encoders, pumps etc.  
Temperature range: -20°C to +60°C.



Ordering details: e.g.: Product No. 601 993 05, Coupling, 6 mm bore

Product No.	Torque max. <sup>1)</sup> Nm	Static Break Torque Nm	Bore B <sup>+0.03</sup> mm	L <sub>1</sub> mm	L <sub>2</sub> mm	L <sub>3</sub> mm	D <sub>1</sub> mm	max. displacement at 3000min <sup>-1</sup>		Torsional stiffness Nm/rad	Weight g	Product No. Spare part Torque disc	Weight g
								Angular ±Degrees	Radial ±mm				
601 993 05	4	13	6	32,4	11,6	9,2	25,4	0,5	0,2	205	76	601 244 00	2,7
601 993 06	4	13	8	32,4	11,6	9,2	25,4	0,5	0,2	205	76	601 244 00	2,7
601 993 07	4	13	10	32,4	11,6	9,2	25,4	0,5	0,2	205	76	601 244 00	2,7
601 993 08	9	53	8	42,0	15,0	12,0	33,3	0,5	0,2	615	165	601 245 00	8
601 993 09	9	53	10	42,0	15,0	12,0	33,3	0,5	0,2	615	165	601 245 00	8
601 993 10	9	53	12	42,0	15,0	12,0	33,3	0,5	0,2	615	165	601 245 00	8
601 993 12	17	57	10	50,8	17,8	15,3	41,3	0,5	0,25	1200	305	601 248 00	12,7
601 993 13	17	57	12	50,8	17,8	15,3	41,3	0,5	0,25	1200	305	601 248 00	12,7
601 993 15	17	57	16	50,8	17,8	15,3	41,3	0,5	0,25	1200	305	601 248 00	12,7
601 993 18	30	95	12	59,6	20,6	18,4	50	0,5	0,25	1375	510	601 250 00	20
601 993 19	30	95	16	59,6	20,6	18,4	50	0,5	0,25	1375	510	601 250 00	20
601 993 20	30	95	20	59,6	20,6	18,4	50	0,5	0,25	1375	510	601 250 00	20

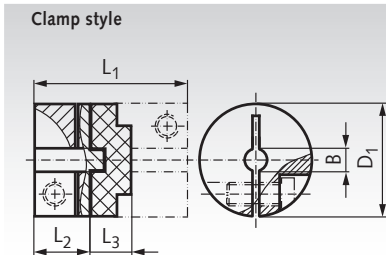
## Torsionally-Stiff Couplings HFD with Through Holes, Stainless

**Material:** Hubs made from stainless steel 1.4305 (AISI 303).  
Torque disc made from black polyacetel.



These 3-part zero backlash couplings provide electrical insulation. They consist of two hubs and a torque disc. They are versatile and of robust design. Large radial compensation, easy mounting even in confined spaces.

**Applications:** see description HZD (above).

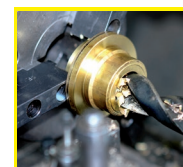


Ordering Details: e.g.: Product No. 601 994 07, Coupling, 6 mm bore

Product No.	Torque max. <sup>1)</sup> Nm	Static Break Torque Nm	Bore B <sup>+0.03</sup> mm	L <sub>1</sub> mm	L <sub>2</sub> mm	L <sub>3</sub> mm	D <sub>1</sub> mm	max. displacement at 3000min <sup>-1</sup>		Torsional stiffness Nm/rad	Weight g	Product No. Spare part Torque disc	Weight g
								Angular ±Degrees	Radial ±mm				
601 994 07	4	13	6	32,4	11,6	9,2	25,4	0,5	0,2	205	76	601 244 00	2,7
601 994 08	4	13	8	32,4	11,6	9,2	25,4	0,5	0,2	205	76	601 244 00	2,7
601 994 09	4	13	10	32,4	11,6	9,2	25,4	0,5	0,2	205	76	601 244 00	2,7
601 994 11	9	53	8	42,0	15,0	12,0	33,3	0,5	0,2	615	165	601 245 00	8
601 994 12	9	53	10	42,0	15,0	12,0	33,3	0,5	0,2	615	165	601 245 00	8
601 994 13	9	53	12	42,0	15,0	12,0	33,3	0,5	0,2	615	165	601 245 00	8
601 994 15	17	57	10	50,8	17,8	15,3	41,3	0,5	0,25	1200	305	601 248 00	12,7
601 994 16	17	57	12	50,8	17,8	15,3	41,3	0,5	0,25	1200	305	601 248 00	12,7
601 994 18	17	57	16	50,8	17,8	15,3	41,3	0,5	0,25	1200	305	601 248 00	12,7
601 994 20	30	95	12	59,6	20,6	18,4	50	0,5	0,25	1375	510	601 250 00	20
601 994 22	30	95	16	59,6	20,6	18,4	50	0,5	0,25	1375	510	601 250 00	20
601 994 24	30	95	20	59,6	20,6	18,4	50	0,5	0,25	1375	510	601 250 00	20

<sup>1)</sup> Operating factors (without shaft displacement):

Load Period	Operating Factor
short term	1
1 hour per day	2
3 hours per day	4
6 hours per day	6
12 hours per day	8



**Reworking within  
24h-service possible.  
Custom made parts  
on request.**