

Spur Gears Made from POM, White, with One-Sided Hub, Straight Tooth System, Milled Teeth

Tooth quality 10d25 DIN 3967.

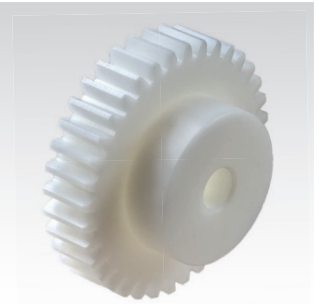
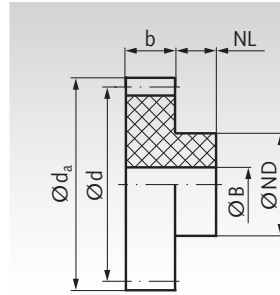
Pressure angle 20°.

Untoleranced dimensions in accordance with DIN ISO 2768 middle.

Temperature limit: continuous 100°C, only short time 140°C.

Water absorption (satiated) 0.5% Cws.

Other material reference values page 864.

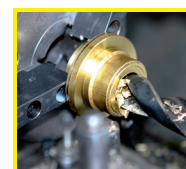


Ordering Details: e.g.: Product No. 293 010 00, Spur Gear, POM, Module 1, 10 Teeth

Module 1 Tooth Width b = 10 mm

Product No.	Number of teeth	b mm	d _a mm	d mm	NL mm	ND mm	BS10 mm	perm. MT* Nm	Weight g
293 010 00	10	10	12	10	6	8	5	0,08	1,0
293 011 00	11	10	13	11	6	8	5	0,10	1,2
293 012 00	12	10	14	12	6	10	5	0,11	1,7
293 013 00	13	10	15	13	6	10	5	0,13	2,0
293 014 00	14	10	16	14	6	10	5	0,15	2,3
293 015 00	15	10	17	15	6	12	5	0,17	2,8
293 016 00	16	10	18	16	6	12	5	0,18	3,2
293 017 00	17	10	19	17	6	12	5	0,19	3,5
293 018 00	18	10	20	18	6	12	5	0,22	4,0
293 019 00	19	10	21	19	6	15	5	0,26	4,9
293 020 00	20	10	22	20	8	15	5	0,29	5,8
293 021 00	21	10	23	21	8	15	5	0,33	6,2
293 022 00	22	10	24	22	8	15	5	0,36	6,5
293 023 00	23	10	25	23	8	15	5	0,40	7,1
293 024 00	24	10	26	24	8	15	5	0,45	7,6
293 025 00	25	10	27	25	8	15	5	0,49	8,2
293 026 00	26	10	28	26	8	15	5	0,54	8,7
293 027 00	27	10	29	27	8	15	5	0,59	9,3
293 028 00	28	10	30	28	8	15	5	0,64	9,9
293 030 00	30	10	32	30	8	15	5	0,76	11,2
293 032 00	32	10	34	32	8	18	6	0,88	13,2
293 035 00	35	10	37	35	8	18	6	1,09	15,4
293 036 00	36	10	38	36	8	18	6	1,16	16,1
293 038 00	38	10	40	38	8	18	6	1,32	17,9
293 040 00	40	10	42	40	8	18	6	1,48	19,6
293 042 00	42	10	44	42	8	18	6	1,66	21,5
293 045 00	45	10	47	45	8	18	6	1,96	24,0
293 048 00	48	10	50	48	8	20	6	2,28	27,8
293 050 00	50	10	52	50	8	20	6	2,45	30,0
293 052 00	52	10	54	52	8	20	6	2,54	32,4
293 054 00	54	10	56	54	8	20	6	2,64	34,6
293 055 00	55	10	57	55	8	20	6	2,69	35,6
293 056 00	56	10	58	56	8	20	6	2,74	36,9
293 060 00	60	10	62	60	8	25	6	2,95	44,1
293 064 00	64	10	66	64	10	25	6	3,16	51,1
293 065 00	65	10	67	65	10	25	6	3,21	52,7
293 070 00	70	10	72	70	10	25	6	3,47	59,6
293 072 00	72	10	74	72	10	30	6	3,57	65,5
293 075 00	75	10	77	75	10	30	6	3,72	71,1
293 080 00	80	10	82	80	10	50	10	3,97	94,7
293 085 00	85	10	87	85	10	50	10	4,22	104,1
293 090 00	90	10	92	90	10	50	10	4,47	113,1
293 096 00	96	10	98	96	10	50	10	4,68	126,1
293 100 00	100	10	102	100	10	50	10	4,96	135,0
293 120 00	120	10	122	120	10	50	10	5,94	182,6

* Basis of calculations see page 197.



**Reworking within
24h-service possible.
Custom made parts
on request.**